



Version 010

INSTRUCTION FOR USE

Monkey

Max user weight: 25 kg
Weight of product: 17.6 kg

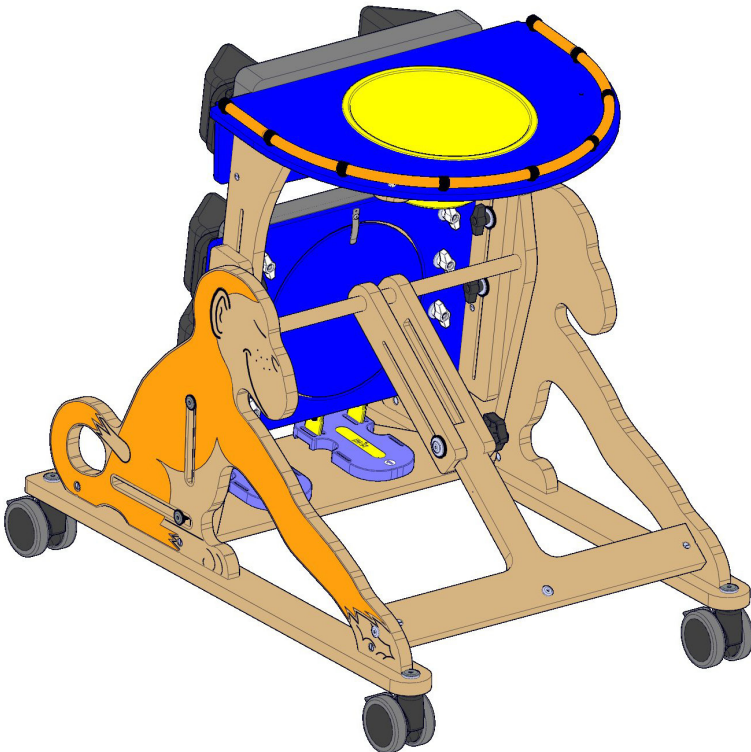


Important Information: These instructions must be kept with the product at all times. This product is a prescribed Medical Device. To be used only under the guidance of a Therapist or Prescribing Practitioner. You must read these instructions carefully before use.

INSTRUCTION FOR USE

Monkey

Note: Some fabric and plastic colours may vary,
adjustments are not affected.



Contents

General Information

Safety Labels	7
Basic Safe Configuration	8
Care and Cleaning Instructions	8
Maintenance	9
Product Induction & Hand Over	10
Specification & Warranty	11
Main Features and Benefits	12

Frequent Adjustments

Castors & Safety Straps	15
Safety Straps.....	16
Tray Angle.....	17
Tray Infill	18

Clinical Adjustments

Upper & Lower Pads.....	20
Thoracic Pads	21
Hip and Lower Pads	22
Angle Adjustment.....	23
Sandal Adjustments.....	24
Sandal Raising Blocks	25

Optional Components

Activity Frame & Grab Bar	27
---------------------------------	----

Maintenance & Inspection

Maintenance & Inspection	29
Frequently Asked Questions.....	31
Notes	31



Important Safety Info



This product must be thoroughly inspected by a qualified person at least annually



Ensure that your Therapist has confirmed that the product is correctly set up, by signing the 'Set Up' section of the Log book before using this product. If the product has not been set up by your Therapist DO NOT USE.



Jenx Limited recommends that children are never left unattended whilst using this Medical Device. Children may slip or fall when unattended and may suffer serious injury. It is the sole responsibility of the person caring for a child using this Medical Device to ensure the safety of the child in the Device should they be left alone.



Always read the instructions before operating. Failure to read and follow the Instruction for Use, especially with regard to moving parts, may pose a risk to the user.



Do not use this product if you suspect or know that it is broken or faulty. Please contact Jenx Limited immediately for advice: Jenx Limited, Tel: +44 (0)114 285 3376.



This product contains small parts which could present a choking hazard to small children.



All Jenx Limited products are tested to meet current Fire Safety regulations. Always keep products away from; naked flames, cigarettes and sources of heat such as heaters.



Jenx Limited supplies the necessary tools to adjust each product. These tools are supplied for use by trained therapists only. Store the tools in a safe place and keep away from children.



Assemble product fully before use. Please contact Jenx Limited if you have any problems at this stage. Jenx Limited, Tel: +44 (0)114 285 3376.



Ensure that good care is taken of your product: clean regularly. Do not use abrasive cleaners. When not in use, store this product in a dry place that is not subject to extreme temperatures. Places not to store this product include garages, attics or garden sheds.



All belts and harnesses should be used at all times. For therapy purposes it may be necessary to deviate from this rule and any deviation should be fully documented as part of a Risk Assessment or Therapy Program and all relevant staff and carers appropriately trained. Secure client with straps before adjusting product. Ensure finger's width between safety strap and client to prevent over tightening or client moving to inappropriate position. Adjust straps for each client and changes of clothing. Minimum Velcro® overlap: 3 inches (7.5cm) on all straps. If strap is not long enough: DO NOT USE PRODUCT.



This product conforms to the European Medical Devices Directive. It has not been tested in conjunction with other manufacturer's products. Do not add any accessories other than Jenx Limited accessories to this product. If in doubt, contact Jenx for advice +44 (0)114 285 3376.



Any changes or alterations carried out by persons other than a Jenx authorised service person will invalidate the warranty and Jenx can accept no liability for any injury or damage so caused.



All Jenx products are Medical Devices and are sold on the understanding that they will be prescribed, issued and maintained in line with current national device management guidelines.

Key



Key to Components



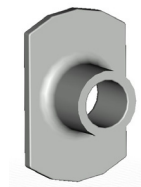
Wing knob



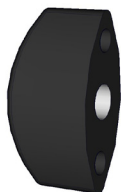
Allen key bolt



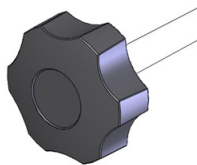
Swiss clip



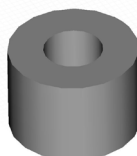
T-Nut



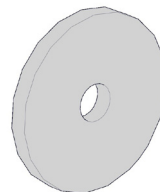
Wing nut



Star knob



Plastic spacer



Plastic washer

Key for Users



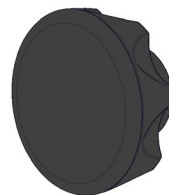
Carers and home users



Re-issue and stores



Professional and technical users



Scalloped wheel

CHAPTER ONE

General Information

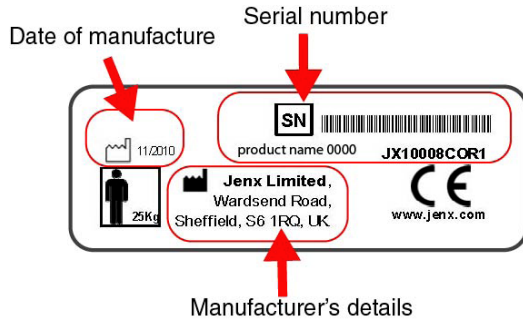


Safety Labels



Serial Number/ CE Certification

The serial number is written on the CE label (see picture), which is located on the product. Please quote this number on all correspondence.



Product Labels

Each Jenx product has a number of pictorial safety labels attached, these refer to the explanations below.



Attention/ Warning

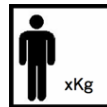
Please read Instruction for use

Only for indoor use

Always fasten and adjust positioning straps and belts to suit the child. Adjust to suit changes in clothing. Allow one fingers width between the belt and the child

Do not leave child unattended (see page 4 for full warning)

DO NOT USE as a mobility device
Never use product on rough ground or uneven surface

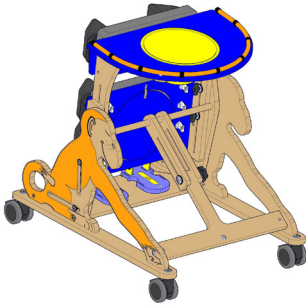


Client weight Limit (changes per model and size)



Conforms to CE Marking Regulations
Medical Devices Directive (MDD) 93/42 EEC

Basic Safe Configuration



The following features must be kept on the Stander at all times: Footplate, Chest, Hip, Lower and Upper Pads, Chest and Hip Straps, Kneecups. Failure to use these basic features may pose a risk to the user. Other accessories can be added but these basic features must always be used.

Care and Cleaning Instructions

Fabrics, Vinyl and PU (polyurethane)

- Minor spills can be removed with a damp cloth
- Spillages should be removed as quickly as possible after contact, dab the stain, do not rub
- Do not over wet the stain
- Do not use organic solvents, dry cleaning fluids, abrasive cleaners or industrial bleaches
- Antibacterial spray or wipes can be used
- Always ensure that the product is dry before use

Wooden Products and Parts

- For deep cleaning a low pressure steam cleaner can be used
- Do not use organic solvents to clean Jenx Products
- Soap and water or antibacterial spray can be used
- Check for breaks or splintering of the wood before re-issuing
- Daily cleaning: Spray polish or wax polish can be used

Metal Frames and Coated Parts

- For deep cleaning a low pressure steam cleaner can be used
- Do not use organic solvents to clean Jenx products
- Soap and water or antibacterial spray can be used
- Daily cleaning: Wipe framework down with a damp cloth as necessary

Maintenance



Daily Checks

Daily checks of the equipment should be carried out by carers. These checks are not technical but a basic understanding of the product is needed. Multiple daily checks may be needed in schools or therapy rooms where the products are used by multiple users. The checks should include the following points:

- Replace any lost or worn washers or bolts
- Check tray for damage. Ensure that the tray edging is secure and that the tray is clean and free of any rough or sharp corners
- Check all upholstery for any signs of wear and tear
- Brush Velcro® to remove fluff
- Check wooden parts for splitting or splintering
- Check straps for fraying and missing or broken buckles
- Clean any stains or spillages
- Contact Jenx Limited if any accessories not manufactured by Jenx Limited have been attached to the product. Unauthorised accessories may affect the safety of this product and invalidate your warranty
- Check that gas spring levers are not bent. Do not use the product if any levers are bent. Contact Jenx Limited to arrange replacement

Monthly Checks

We recommend that on a monthly basis a competent person who is familiar with this piece of equipment and who has been trained in its use should carry out a more detailed check:

- Check that all nuts and bolts are in place and secured
- Check that all mechanical movements operate fully
- Check the structure of the product for signs of fatigue
- Castors: Lift base and check each wheel to ensure it is not loose or worn. Remove any grease or dirt that has built up on the wheels, check that the brake stops the wheels rotating (where applicable)
- Check gas springs for normal operation and resistance. Slow descent (creeping) of the gas spring can be checked by observing the position of the unit over a period of time
- Check that gas spring levers are not bent. Do not use the product if any levers are bent. Contact Jenx Limited to arrange replacement

If you have filled your product inspection log book, copies can be printed from www.jenx.com



This product must be thoroughly inspected by a qualified person at least annually

Product Induction & Hand Over



This product is a Prescribed Medical Device and as such it is important that all users understand the use and adjustments that this product offers. This booklet shows the range of adjustments and gives guidelines for each type of user to follow.

Professional/Technical users

This refers to the Therapist and Prescribing Practitioner.

Ensure you read all sections in this booklet and are fully familiar with all the adjustments. As well as the selection, prescription and set up of the product to suit the client's needs, the technical user has the responsibility for the induction of the Carer, ensuring that the Carer:

- Has an understanding of the safety aspects of the product
- Is familiar with the product. What to use and what not to use
- Knows which accessories have been added and what daily adjustments to make
- Has an understanding of the care and cleaning procedures

A formal hand over procedure should be adopted for this product. Use the separate Inspection Log to record set ups and changes to the product. Jenx Limited offers Product Courses for Technical Users. Please contact us for more information.

Carer (This section refers to the daily carer)

This product is a Prescribed Medical Device. It should only be used with the guidance of a prescribing professional. Do not make any adjustments other than those you have been instructed to make.

The Carer section of this guide gives the adjustments needed to aid daily use only, any other adjustments are only to be performed by the Therapist.

Re-Issue (This section refers to Stores Personnel)

Stores personnel must follow the checks and maintenance guide before re-issue. The Medicines and Healthcare products Regulatory Agency (MHRA) releases regular bulletins regarding product updates and issues. These should be monitored.

- Records should be kept on all products serviced or re-issued
- Repairs or replaced parts should be traceable
- The Jenx serial number should always stay with the product and never be removed
- Instructions should always be issued with the product. Copies are available from Jenx Limited or can be downloaded from www.jenx.com
- Always inform the technical user before a product is issued to a home for set-up purposes
- If the product is to be re delivered, ensure adequate and secure packaging is used
- If in any doubt as to the safety of this product do not issue it, contact Jenx Limited for advice
- Products must only be issued fully assembled, clean and in good working order. Instruction for Use must be with the product

Jenx Limited offer Technical User Courses for stores personnel. The course gives guidance for: maintenance, inspection of the products, regulatory information, cleaning. Please contact us for more information.

Specification & Warranty



Age Range	9 months to 4 years	
Max User Weight	25 kg	
	Min (mm)	Max (mm)
Height from Sandals	510	750
Chest Width	150	235
Hip Width	150	235
Hip Pad Height from Sandals	360	600
Thoracic Pad Height	490	730
Base Footprint	880 x 575	
Angle Range	0 ° to 70° prone	

Warranty

The Instruction for Use of this product should be followed carefully. It is impossible to eliminate all risks inherently associated with the use of this product. Product failure or other unintended consequences may result because of such factors as improper storage, use or maintenance, unauthorised and inappropriate alteration or repair or improper or violent treatment, excessive strain, use of improper replacement parts, or because of normal wear and tear, all of which are beyond the control of the Manufacturer and Seller. Buyer and User assume all such risks.

Manufacturer and Seller warrant that this product will be free from defects in material and workmanship for a period of 24 months from the date of purchase and is reasonably fit for the purposes stated in the Instruction for Use, subject to the inherent risks under normal use conditions. This Warranty does not extend to the use of the product contrary to the Instruction for Use, or under abnormal conditions, or under conditions not reasonably foreseeable to or beyond the control of the Manufacturer or Seller. Buyer and User assume the risk of any such use. MANUFACTURER MAKES NO WARRANTIES OF SATISFACTORY QUALITY OR OF FITNESS FOR A PARTICULAR PURPOSE NOR ANY OTHER EXPRESS OR IMPLIED WARRANTY EXCEPT AS STATED ABOVE.

In no event shall Manufacturer or Seller be liable for any incidental, consequential or special damages resulting from the use of this product. THE EXCLUSIVE REMEDY OF THE USER OR BUYER AND THE EXCLUSIVE LIABILITY OF MANUFACTURER AND SELLER FOR ANY AND ALL CLAIMS, LOSSES, INJURIES OR DAMAGES (INCLUDING CLAIMS BASED ON BREACH OF WARRANTY, CONTRACT, NEGLIGENCE, TORT STRICT LIABILITY OR OTHERWISE) RESULTING FROM THE USE OF THIS PRODUCT, SHALL BE THE RETURN OF THE PURCHASE PRICE OF THE PRODUCT OR THE REPLACEMENT OF THE PRODUCT.

Manufacturer and Seller offer this product, and Buyer and User accept it, subject to the foregoing conditions of sale and limitations of warranty and liability, which may not be modified except by written agreement signed by a duly authorised representative of the Manufacturer.

Main Features and Benefits

Key



The adjustment can be found on the page specified

The priority order in which it is recommended to adjust the product

pg 15 5

Safety Straps

Benefits: Holds the user securely in place during use

pg 21 4

Hip / Thoracic Pads

Benefits: Adjusts to support or brace the child and helps to improve symmetry

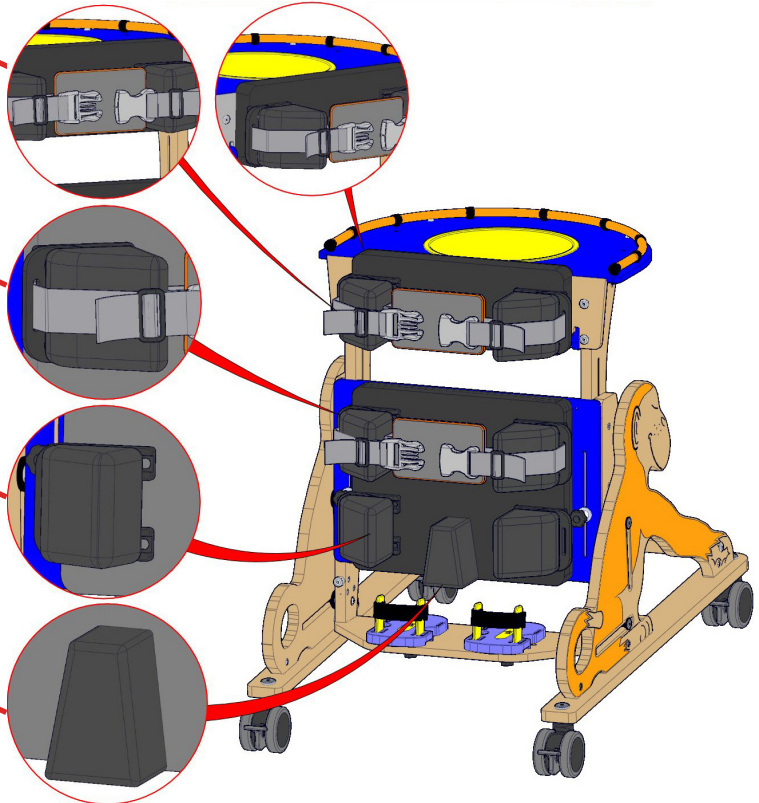
pg 22 4

Knee Pads

Benefits: Adjusts to support or brace the child and helps to improve symmetry

pg 22

Abduction Block





pg
17

Tray

Benefits: The tray gives a surface for the child to play and learn on. It is adjustable for height and angle and can be removed.

pg
20

2

Height Adjustment

Benefits: The stander can accommodate users of different heights

pg
23

3

Angle Adjustment

Benefits: Can accommodate users of different abilities as altering the angle of standing changes the forces acting on the child

pg
24

6

Sandals

Benefits: Ensure the users feet are held firmly in position

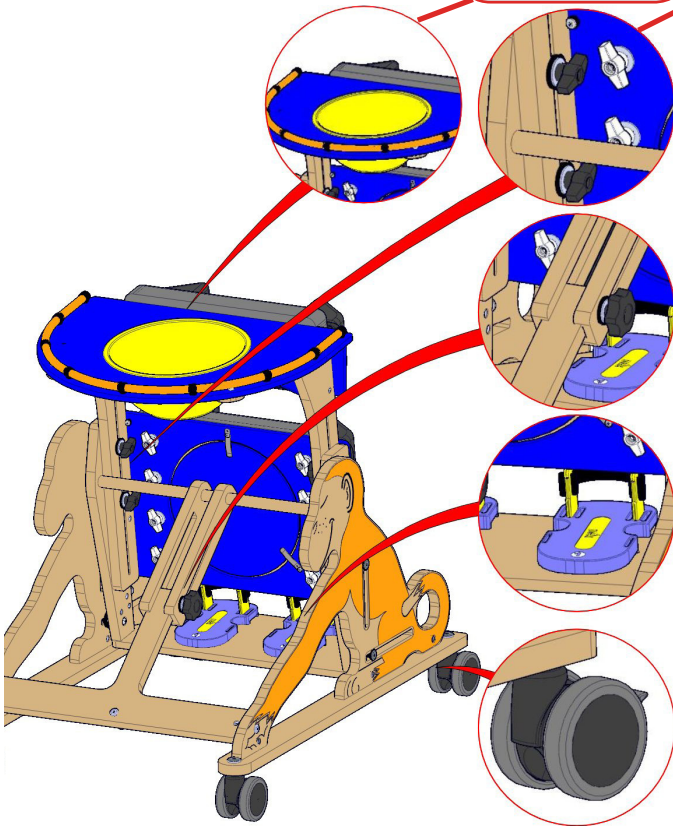
pg
15

1

Locking

Castors

Benefits: All four castors lock to ensure that the stander stays stationary.



CHAPTER TWO

Frequent Adjustments

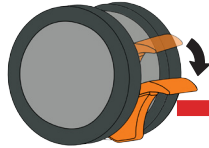
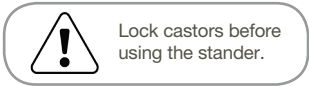


Castors & Safety Straps

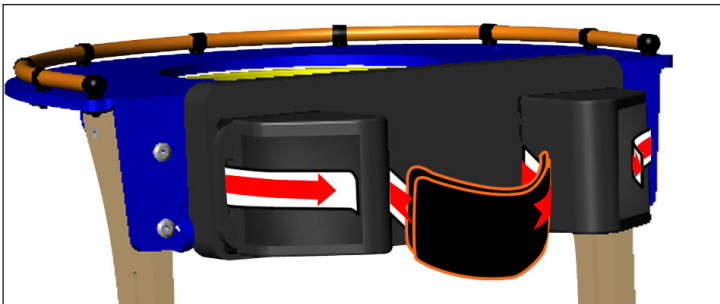


Lock Castors

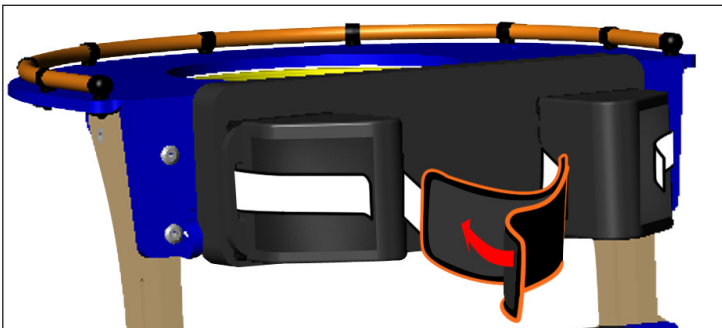
Press down on the lever to lock the castor.



Safety Straps

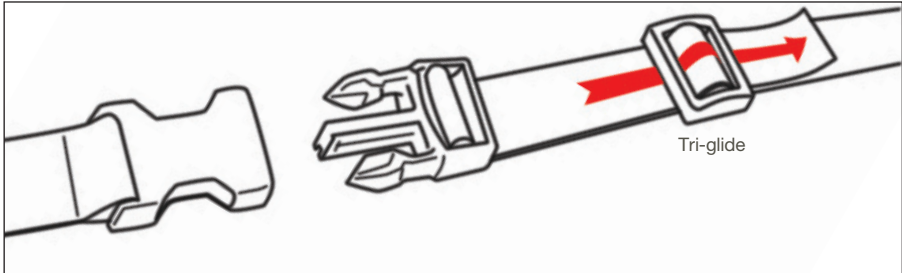


To attach the Thoracic and Hip straps, pass the narrow portion of the strap under the side pads and attach to the Velcro receptive material at the back of the pad.

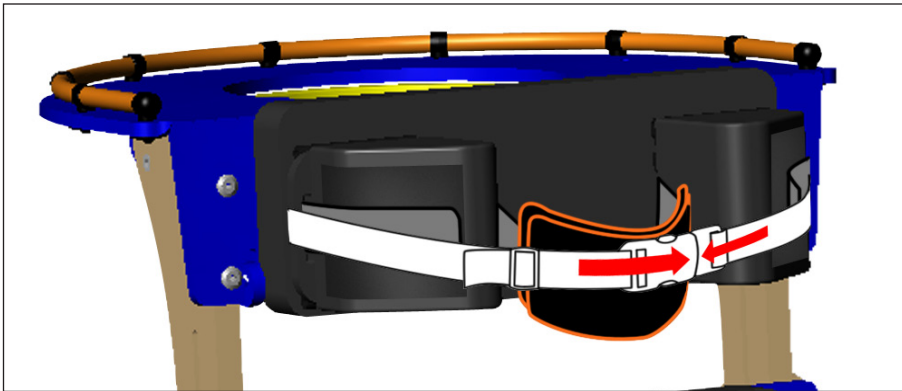


Use the Velcro in the middle of the strap to secure your child and use the fine adjustment of the thinner portion of the strap to set the final length.

Safety Straps



To adjust the length of the safety strap, thread the strap through the buckle and tri-glide until desired length is achieved. Ensure that the safety strap end is secured by the tri-glide at all times.

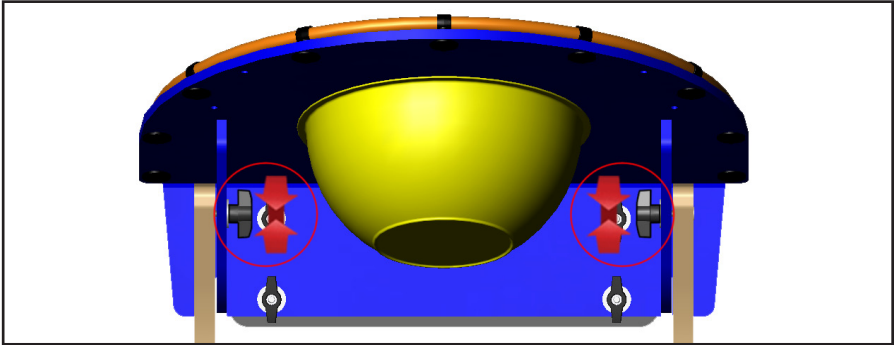


Always use the safety straps when the stander is in use. The safety strap should be secured on the outside of the Hip and Thoracic straps and over the sidepads, as above.

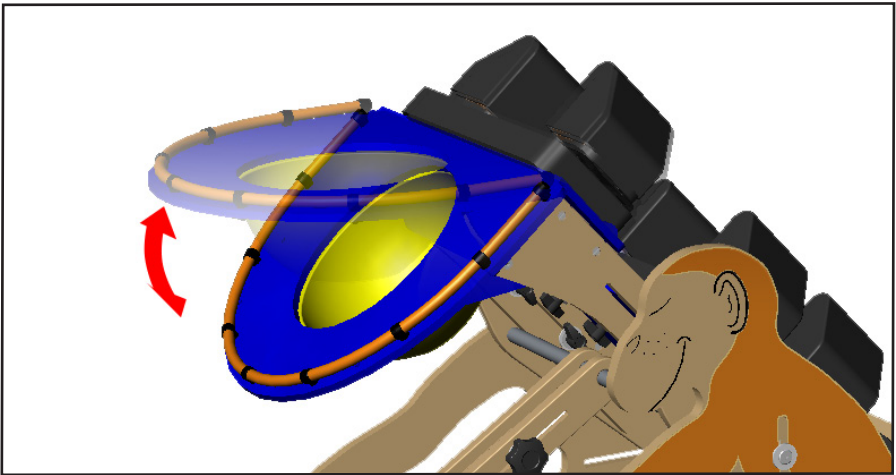


All belts and harnesses should be used at all times. For therapy purposes it may be necessary to deviate from this rule and any deviation should be fully documented as part of a Risk Assessment or Therapy Program and all relevant staff and carers appropriately trained. Secure client with straps before adjusting product. Ensure finger's width between safety strap and client to prevent over tightening or client moving to inappropriate position. Adjust straps for each client and changes of clothing. Minimum Velcro® overlap: 3 inches (7.5cm) on all straps. If strap is not long enough: DO NOT USE PRODUCT.

Tray Angle



To alter the tray angle first loosen the Wing Knobs circled above.

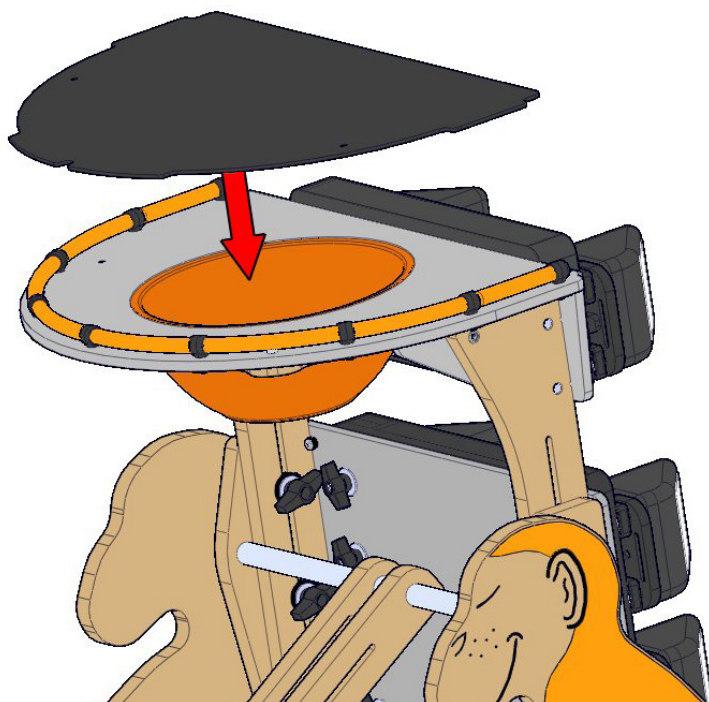


Alter the tray angle and re-tighten Wing Knobs to secure the angle.



Only the occupant of the product should lean on the tray

Tray Infill



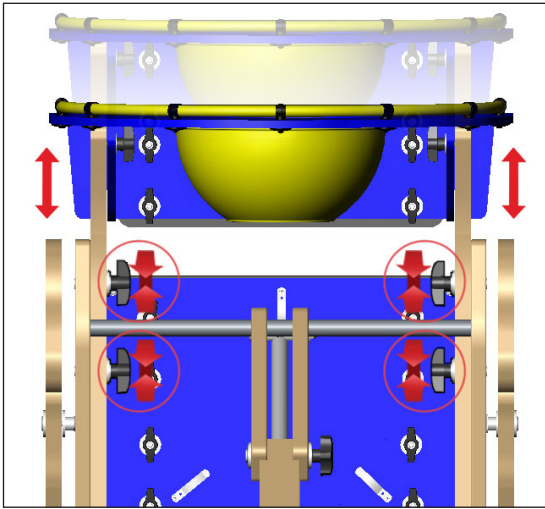
The tray infill fits onto the top of the monkey tray, it simply slots under the tray rail.

CHAPTER THREE

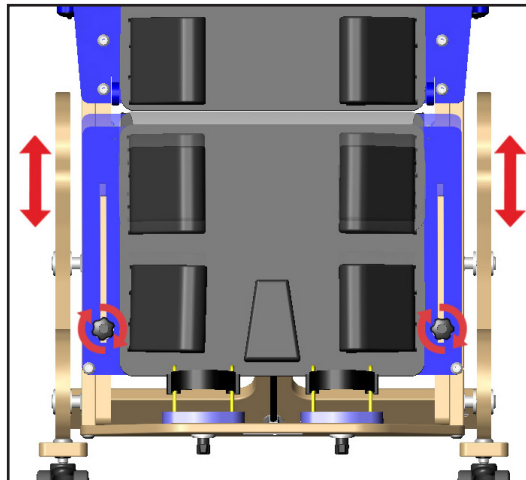
Clinical Adjustments



Upper & Lower Pads

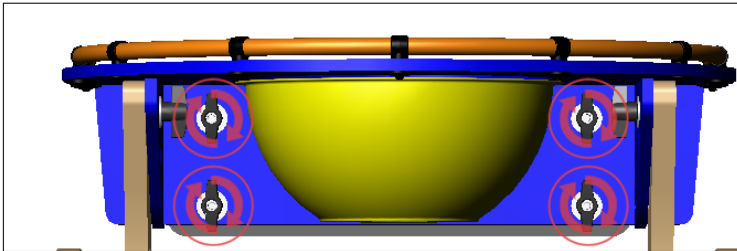


To alter the Upper Pad height, loosen the 4 Wing Knobs circled above and raise pad to the desired height before re-tightening.

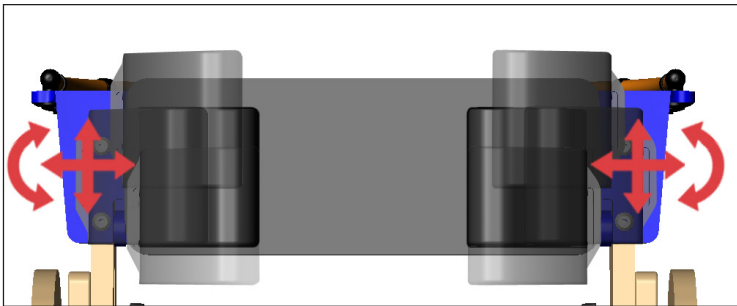


To alter the Lower Pad height, loosen the Scallop Wheels circled above and raise pad to the desired height before re-tightening.

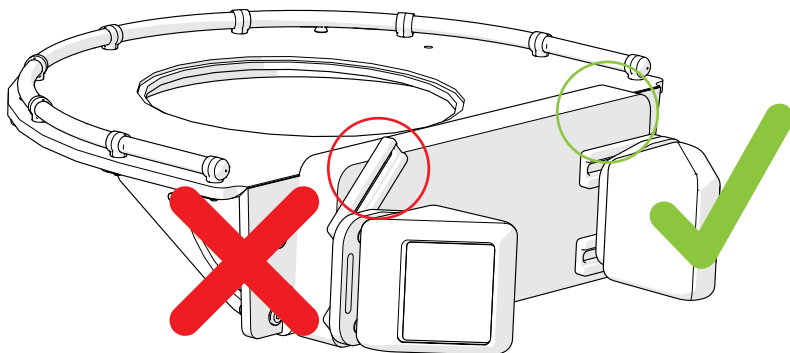
Thoracic Pads



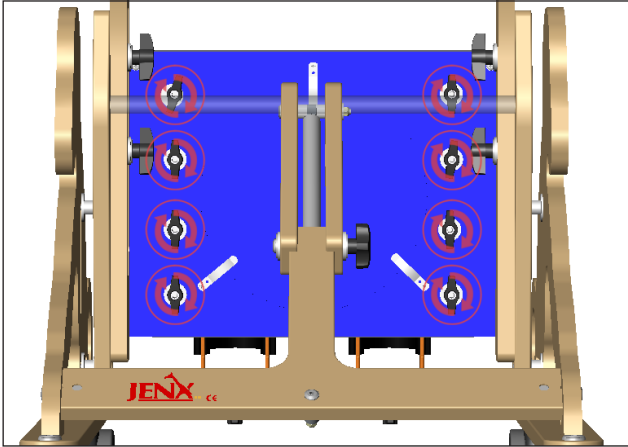
To alter the Side Pads first loosen the Wing Knobs circled above.



Adjust the Side Pads to desired height, angle and width before re-tightening Wing Knobs circled in the previous step.

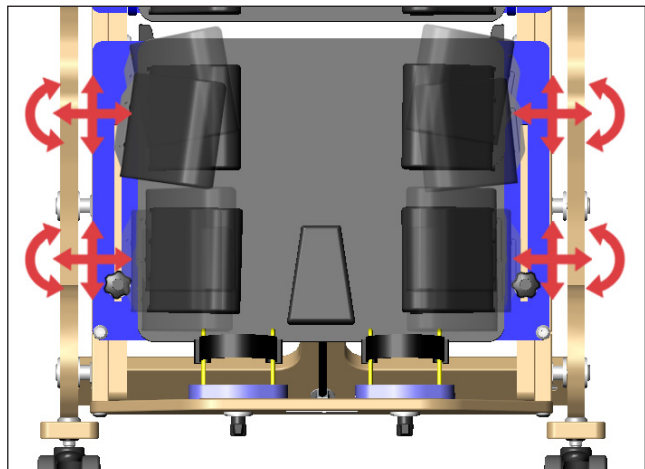


Hip and Lower Pads



To alter the Lower Side Pads first loosen the Wing Knobs circled above.

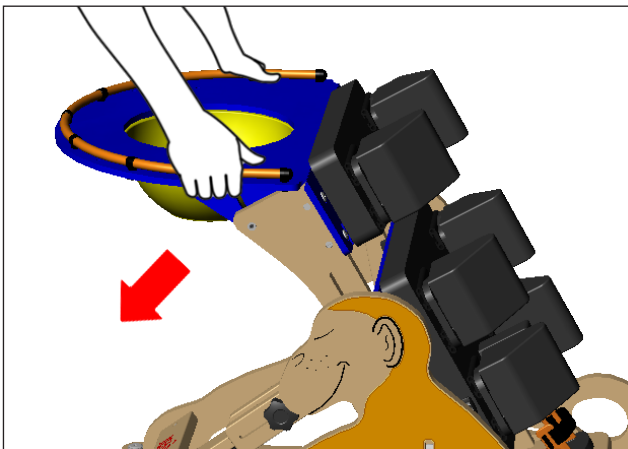
Adjust the pads to desired height, angle and width before re-tightening Wing Knobs circled in the previous step.



Angle Adjustment

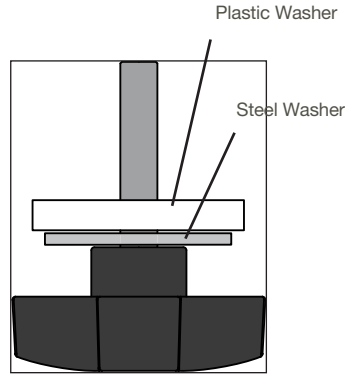


Adjust the angle of the stander by, first, loosening the Scallop Wheel circled above.



Move the Monkey to the desired angle by pulling the rear end of the tray towards you, whilst pushing downwards simultaneously. Re-righten the Scallop Wheel whilst holding Monkey at your chosen angle.

Sandal Adjustments

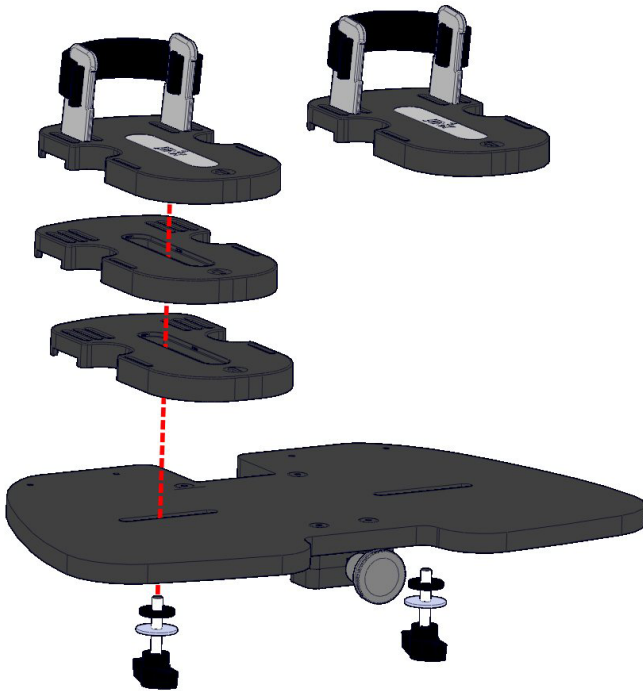


Attach Sandals to the footplate as above, using the Wing Knob and washer configuration seen to the right.



Loosen Wing Knobs to adjust the angle, width and depth of Sandals. Tighten Wing Knobs after altering.

Sandal Raising Blocks



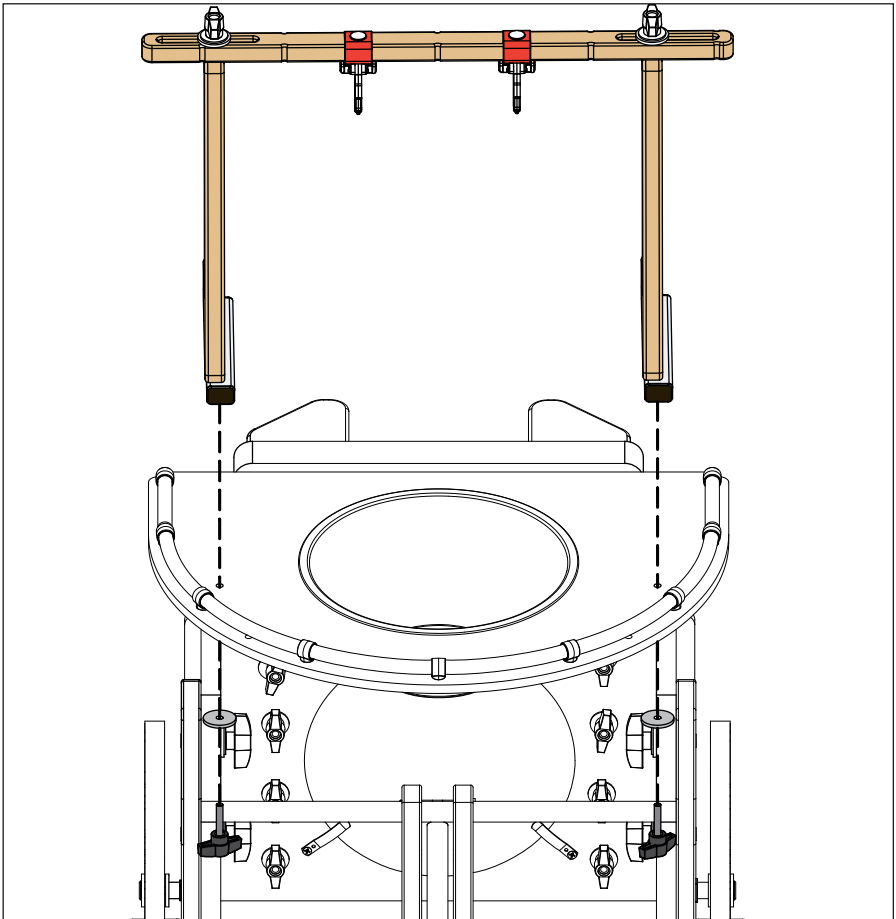
Attach Sandal Raising Blocks between the sandals and footplate using the Wing Knob and washers supplied with the sandal raising blocks.

CHAPTER FOUR

Optional Components



Activity Frame & Grab Bar



Attach the Activity frame or Grab Bar onto the Tray using the provided Wing Knob and Washer, as shown above, both fit into the same way.

CHAPTER FIVE

Maintenance & Inspection



Maintenance & Inspection



Each Jenx product must be checked and inspected in line with the advice given in this IFU. Failure to complete these regular checks poses a risk to the user. Every year, each product must be thoroughly inspected by a person competent to assess faults and able to rectify or out source rectification. The maximum period that should elapse between full product inspections is 1 year. After 3 years or from purchase where a product is subject to heavy use, this should be increased to six monthly full inspections. For complete peace of mind, Jenx Limited offers Product Inspections. Charges apply

Jenx Limited products are usually assessed for an individual client, therefore the following points must be adhered to prior to the re-issuing of any Jenx products.

- Check with issuing Therapist that the product is standard and no special attachments or modifications have been made. If modifications have been made: contact Jenx Limited for advice
- Check that the product has been fully cleaned, taking into account the condition of the fabric and the foam inside
- Check that all hand wheels and levers are in good condition and fitted securely
- Check the product and any accessories fully for any sign of wear and tear or distortion
- Check that all the functions of the product are working correctly e.g. tilt, height adjustment or back recline, etc.
- Always ensure that the Instruction For Use stays with the product and is passed on to the new user. For new sets of instructions please contact our Sales Support Department on 0114 285 3376 or visit www.jenx.com
- If the product is being delivered, always ensure that the product is packed securely
- We strongly recommend that all straps and harnesses are replaced with new ones before re-issue. Only genuine Jenx parts should be fitted
- Check that gas spring levers are not bent. Do not use the product if any levers are bent. Contact Jenx Limited to arrange replacement
- Check that the product to be re-issued is to the correct specification for the intended new user. Each user may require different ranges of accessories

Follow the product log book document, supplied separately.

Use extra pages if required, extra sheets are available from the Jenx Limited website: www.jenx.com

Maintenance & Inspection



Stores should follow the MHRA guidelines for the recording, issuing, servicing or repairing of products in their charge. Check the MHRA web site for the latest bulletins: www.mhra.gov.uk

- **Structure** Is the product structurally sound, no wobbles or loose parts?
- **Safety** Is the product safe and fit for use?
- **Straps** Are the straps in good condition and not showing any signs or wear? Check straps for fraying and missing or broken buckles, ensure all webbing end clips are in place.
- **Stability** Is the product stable on an even surface, no rocking?
- **Screws, Nuts and Bolts** Are there nuts and bolts missing or damaged?
- **Castors** Are the castors in good order? Do swivels and brakes work?
- **Springs** Do all gas springs work and hold pressure and weight?
- **Sandals** Are the sandals in good condition? Do straps and Velcro show signs of wear?
- **Upholstery and PU** Is the upholstery and PU in good, clean condition with no rips, wear or gaping of the cushions?
- **Steel and Woodwork** Is the steel and wood work in good order? Check for deformities, splinters or breaks

If there is any doubt about the safety of the product, do not hesitate to contact our Customer Support Department for advice

Products should be thoroughly decontaminated in line with MHRA and local guidelines prior to inspection, storage and re-issue

Jenx Limited can take no responsibility for re-issue of products

Frequently Asked Questions



Question: Who is a qualified person to inspect products?

Answer: The purchasing authority has a duty under the MHRA guidelines DB2006 (05) to address training for Medical Devices Management. Check with your authority.







Question: Does Jenx run technical competency courses?

Answer: Yes. Please visit jenx.com for details of available courses.

Question: Why does my tilt-in-space lever not work?

Answer: If your lever does not operate properly, ensure that it is fully unlocked and try again. Do not use excessive force

Notes

-  Seating
-  Standing
-  Sleeping
-  Therapy
-  Mobility
-  Bathroom